

# Electrical connection technology, for fieldbus connection

Technical data – FBS-SUB-9-GS-...-B

- Fieldbus plug with 9-pin Sub-D connection
- Variants for different fieldbus systems
- Position of DIL switches can be read externally
- Easy to assemble



| General technical data          |                                   |                       |
|---------------------------------|-----------------------------------|-----------------------|
| Type                            | FBS-SUB-9-GS-...-B                | FBS-SUB-9-GS-1x9POL-B |
| Type of mounting                | 2 M3x20 screws                    |                       |
| Cable connector                 | Pg9                               |                       |
| Electrical connection           | 9-pin plug, Sub-D                 |                       |
| Permissible cable diameter [mm] | 5 ... 10                          |                       |
| Protection class to EN 60529    | IP65/67 (assembled), IEC/EN 61984 |                       |
| Material                        | Housing                           | Reinforced polyamide  |
|                                 | Seal                              | Nitrile rubber        |
|                                 | Union nut                         | Nickel-plated brass   |
|                                 | Screws                            | Steel                 |
| Material note                   | RoHS-compliant                    | -                     |
| Height/length/width [mm]        | 62/61/20                          |                       |

| Operating and environmental conditions  |                     |  |
|---|---------------------|--|
|   | FBS-SUB-9-GS-...-B  | FBS-SUB-9-GS-1x9POL-B  |
| Ambient temperature [°C]                | 0 ... +50           |  |
| Storage temperature [°C]                | -20 ... +70         |  |
| Relative air humidity                   | 95%, non-condensing |  |
| CE mark (see declaration of conformity) | -                   | <ul style="list-style-type: none"> <li>• as per EU EMC directive</li> <li>• to EU Low Voltage Directive</li> </ul> |

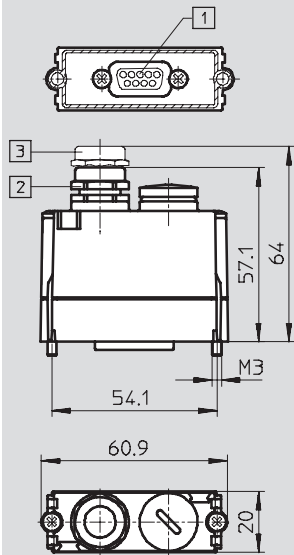
| Ordering data |  |   |                    |                              |               |
|---------------|--|---|--------------------|------------------------------|---------------|
|               | Additional functions                       | Fieldbus interface  | Product weight [g] | Type                         | Part No.      |
|               | Disconnection of outgoing fieldbus segment | Profibus DP<br>2x 2 spring-loaded terminal  | 60                 | <b>FBS-SUB-9-GS-DP-B</b>     | <b>532216</b> |
|               | Integrated RBST bridge                     | Interbus nodes CPX and CPV<br>2x 5 spring-loaded terminal                             | 60                 | <b>FBS-SUB-9-GS-IB-B</b>     | <b>532217</b> |
|               | -  | CC-Link CPX and CPV<br>2x 4 spring-loaded terminal<br>BUS In - BUS Out looped through | 60                 | <b>FBS-SUB-9-GS-2x4POL-B</b> | <b>532220</b> |
|               | -  | CPX-FEC<br>2x 9 spring-loaded terminal  | 60                 | <b>FBS-SUB-9-GS-1x9POL-B</b> | <b>534497</b> |

# Electrical connection technology, for fieldbus connection

Technical data – FBS-SUB-9-GS-...-B

## Dimensions

Download CAD data → [www.festo.com](http://www.festo.com)



- 1 Sub-D plug, 9-pin
- 2 Cable connector, polymer, Pg9
- 3 Cable connector, metal, Pg9